

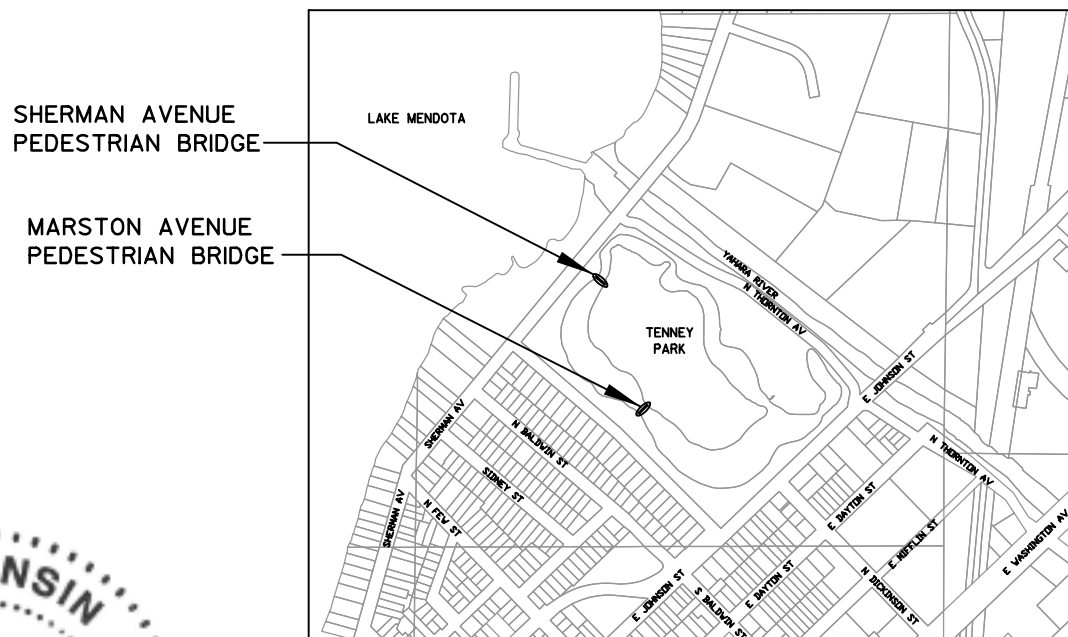
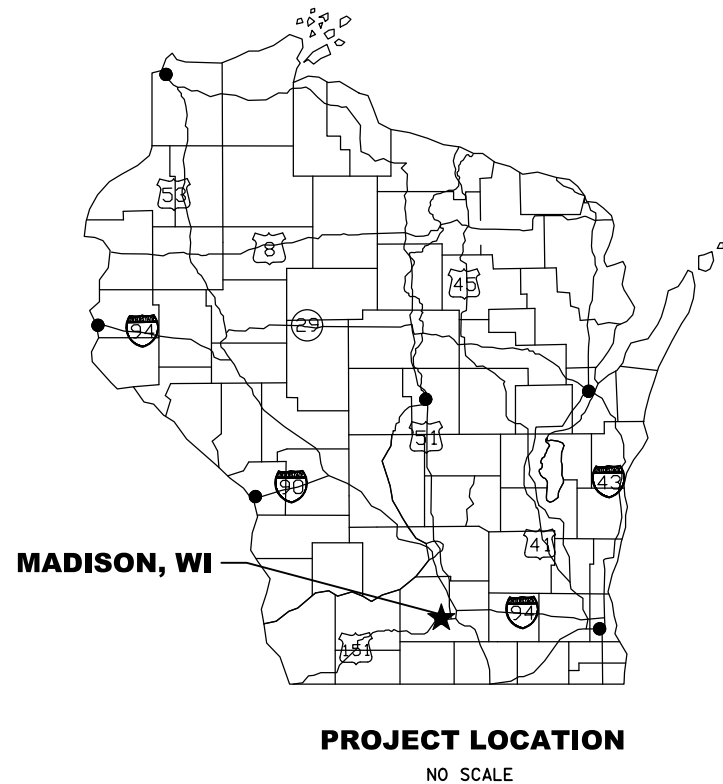
TENNEY PARK CONCRETE BRIDGE HISTORIC RESTORATION - 2014

FOR THE

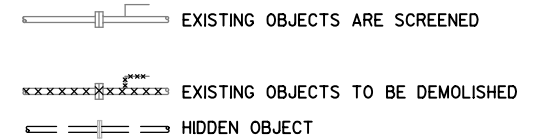
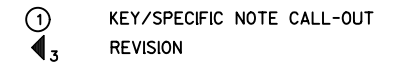
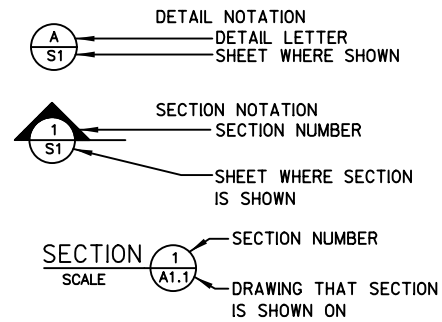
CITY OF MADISON PARKS DIVISION

MADISON, WISCONSIN

FEBRUARY, 2014



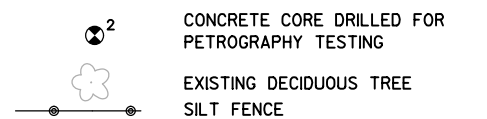
DRAFTING SYMBOLS



ARCHITECTURAL SYMBOLS



TOPOGRAPHICAL SYMBOLS



910 West Wingra Drive
Madison, WI 53715
608-251-4843
608-251-8655 fax
www.strand.com

CONTRACT NO. 7266
PROJECT NO. 53W1747

LIST OF DRAWINGS

SHEET NO.	DRAWING NO.	DRAWING TITLE
	<u>GENERAL</u>	
1	G1	TITLE SHEET.
	<u>CIVIL</u>	
2	C1	SITE PLAN.
	<u>STRUCTURAL</u>	
3	S1	MARSTON AVENUE PEDESTRIAN BRIDGE DEMOLITION WORK.
4	S2	MARSTON AVENUE PEDESTRIAN BRIDGE RESTORATION WORK.
5	S3	MARSTON AVENUE PEDESTRIAN BRIDGE RESTORATION WORK DETAILS.
6	S4	SHERMAN AVENUE PEDESTRIAN BRIDGE DEMOLITION AND RESTORATION WORK.



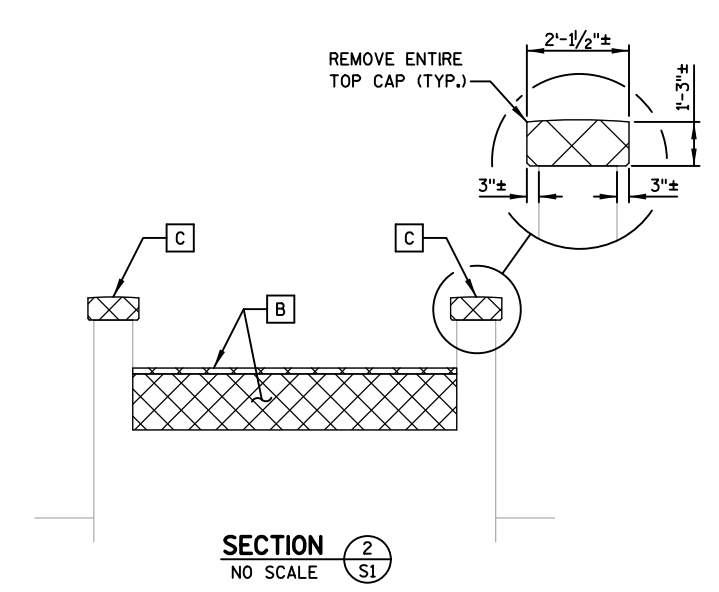
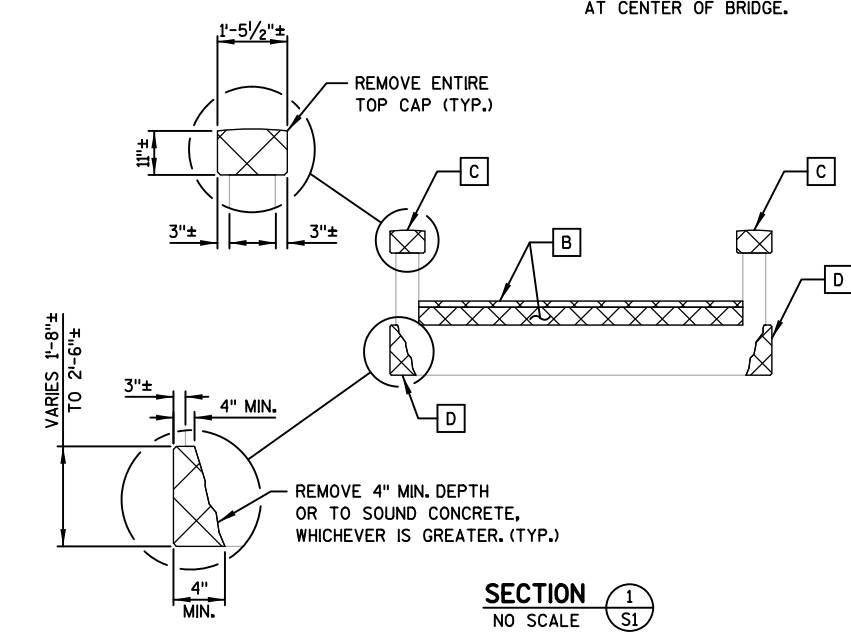
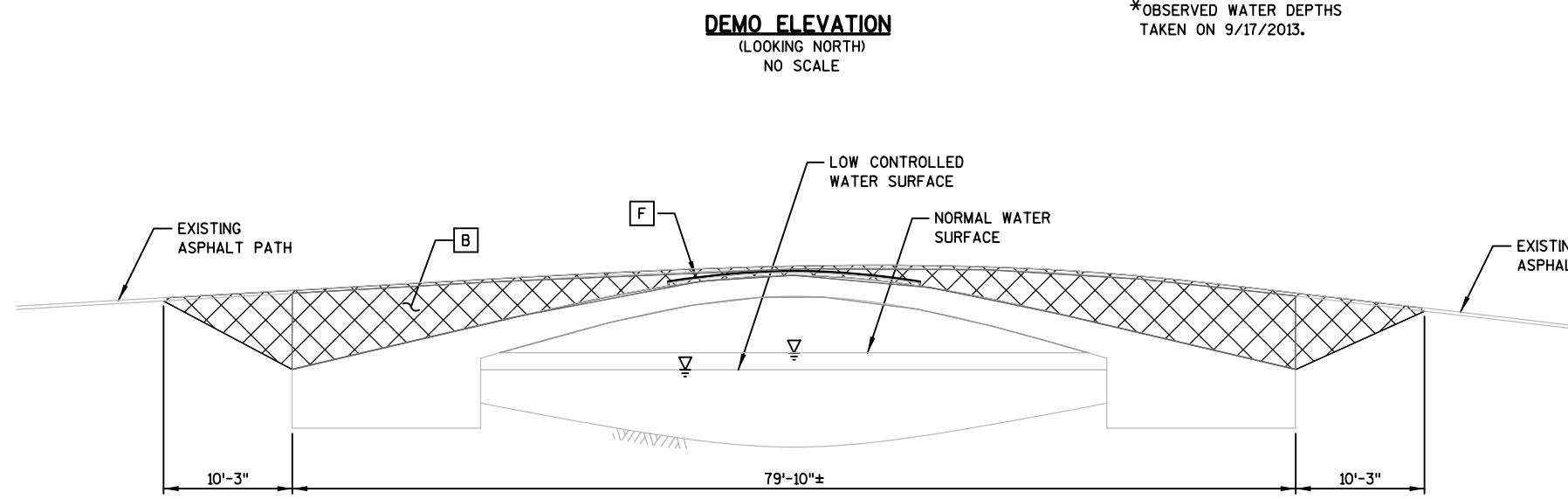
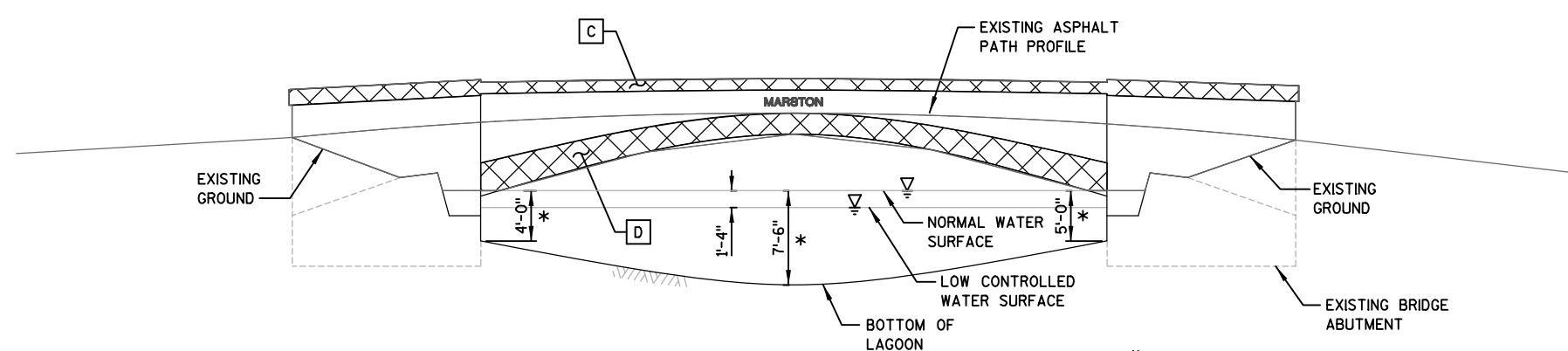
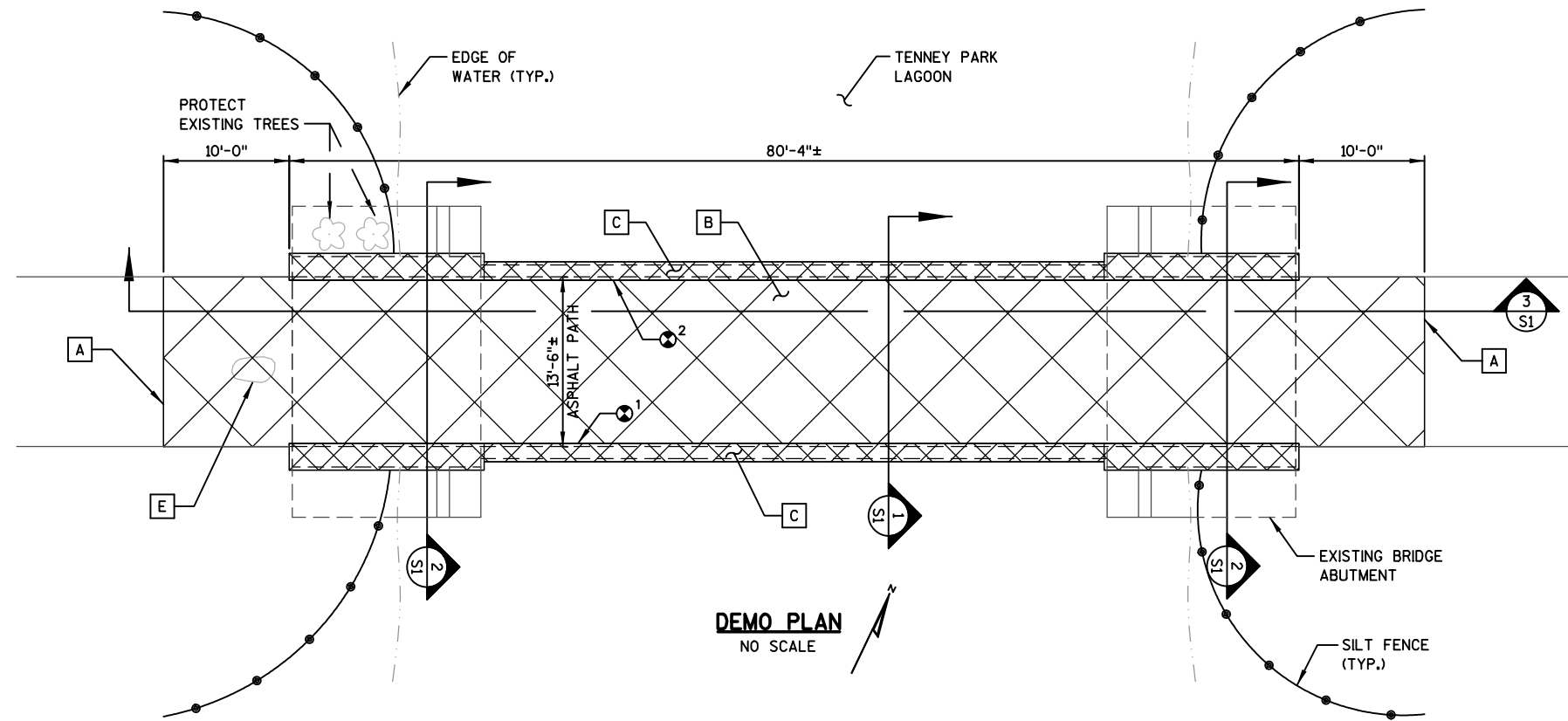
SHEET
1
G1

GENERAL NOTES

SEE GENERAL NOTES ON SHEET S2.

DEMOLITION NOTES

- A** SAWCUT EXISTING ASPHALT PAVEMENT.
- B** REMOVE EXISTING ASPHALT PAVEMENT AND FILL DOWN TO TOP SURFACE OF CONCRETE ARCH.
- C** REMOVE UPPER PORTION OF EXISTING CONCRETE PARAPET. SEE SECTIONS FOR EXTENTS.
- D** REMOVE OUTER PORTION OF EXISTING CONCRETE ARCH. SEE SECTIONS FOR EXTENTS. TYPICAL BOTH SIDES OF BRIDGE.
- E** REMOVE EXISTING ROCK. SALVAGE FOR REUSE AT SAME LOCATION.
- F** REMOVE EXISTING CONCRETE OVERLAY AND EMBEDDED ANGLES DOWN TO CONCRETE ARCH. CONCRETE OVERLAY IS APPROXIMATELY 20'-0" LONG AT CENTER OF BRIDGE.



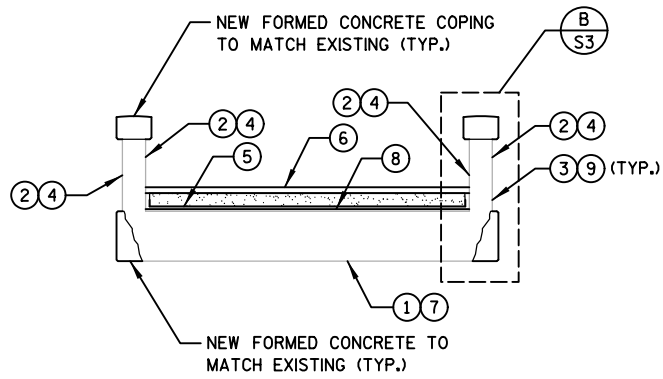
NO.	REVISIONS	DATE
1	DNR CHAPTER 30 APPLICATION	10/30/13
2	SHPO REVIEW	11/25/13
3	BID SET	2/14/14

**MARSTON AVENUE
PEDESTRIAN BRIDGE DEMOLITION WORK**
TENNEY PARK CONCRETE BRIDGE
HISTORIC RESTORATION - 2014
CITY OF MADISON PARKS DIVISION
MADISON, WISCONSIN

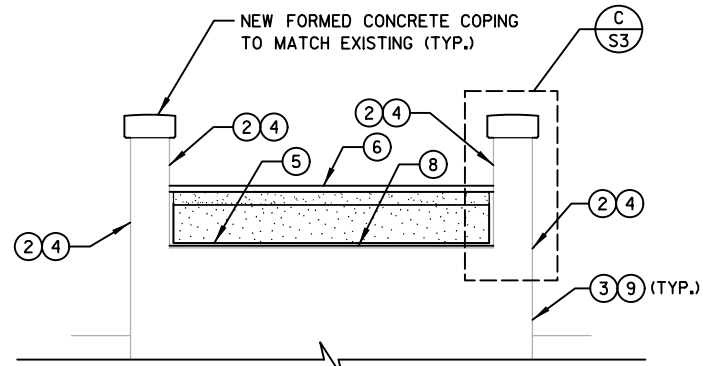
JOB NO.
1020.078
PROJECT MGR.
KRB



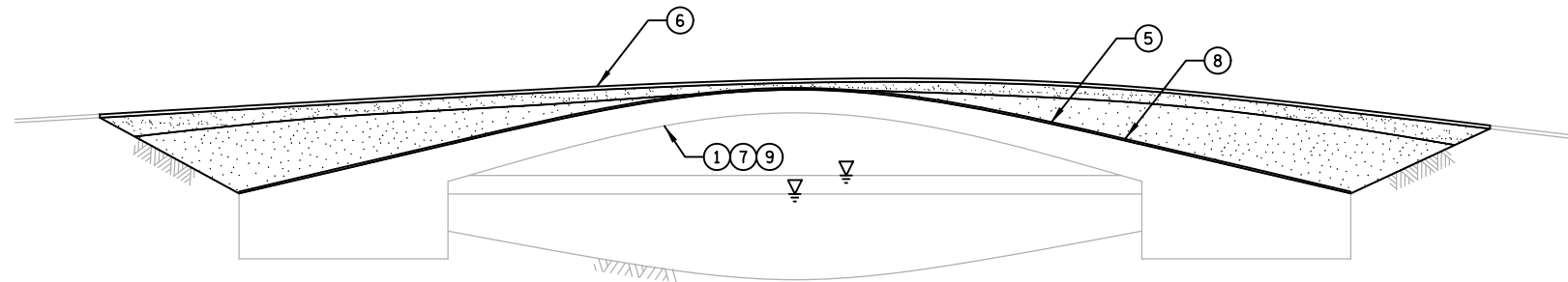
SHEET
3
S1



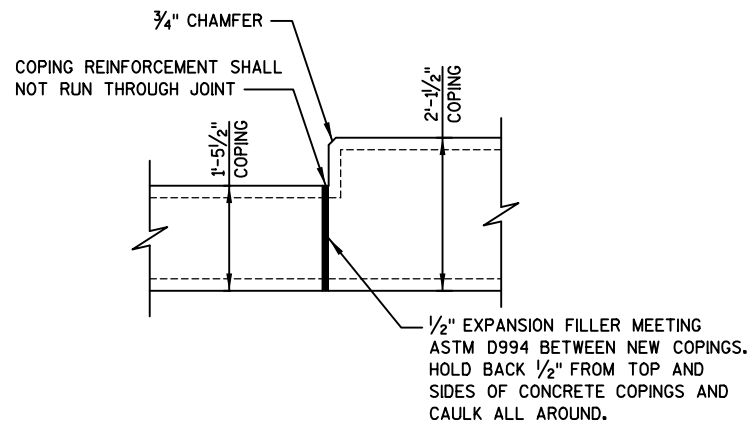
SECTION 1
NO SCALE S3



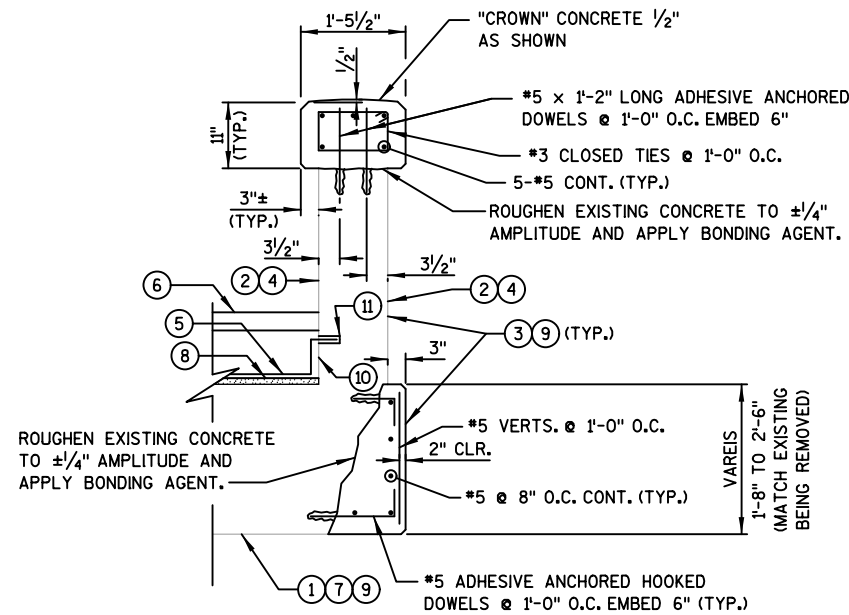
SECTION 2
NO SCALE S3



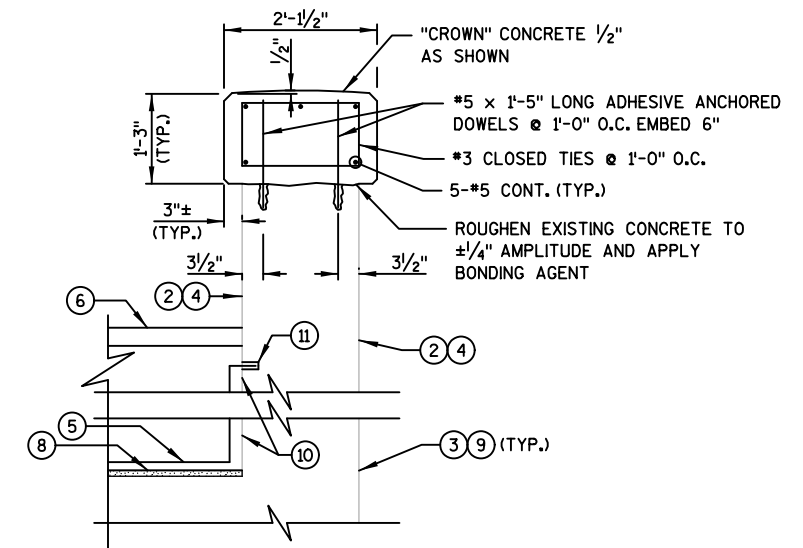
SECTION 3
S3



COPING CONTROL JOINT A
S3



COPING DETAIL B
S3



COPING DETAIL C
S3

GENERAL NOTES

SEE GENERAL NOTES ON SHEET S2.

KEY NOTES

- ① SOUND ENTIRE UNDERSIDE OF CONCRETE ARCH ABOVE THE NORMAL HIGH WATER ELEVATION IN PRESENCE OF ENGINEER AND PERFORM CONCRETE SURFACE REPAIRS WHERE REQUIRED.
- ② CLEAN ALL ABOVE-GRADE VERTICAL SURFACES OF CONCRETE PRIOR TO ANY CONCRETE SURFACE REPAIR WORK.
- ③ APPLY CONCRETE SEALER TO ALL EXPOSED ABOVE-GRADE SURFACES OF CONCRETE (EXCEPT UNDERSIDE OF ARCH) IN ACCORDANCE WITH THE SPECIAL PROVISIONS.
- ④ SOUND ALL EXISTING ABOVE-GRADE CONCRETE SURFACES EXPOSED TO VIEW AND PERFORM CONCRETE SURFACE REPAIRS WHERE REQUIRED.
- ⑤ WATERPROOFING MEMBRANE. APPLY TO ENTIRE TOP SURFACE OF NEW CONCRETE TOPPING OVER EXISTING CONCRETE ARCH AND WRAP UP INSIDE FACES OF CONCRETE PARAPETS TO UNDERSIDE OF NEW ASPHALT PAVING. INSTALL PREFABRICATED DRAINAGE COMPOSITE OVER ALL MEMBRANE SURFACE PRIOR TO BACKFILLING.
- ⑥ 3" ASPHALT OVER 8" CRUSHED AGGREGATE BASE COURSE OVER SELECT FILL.
- ⑦ APPLY CEMENT-BASED WATERPROOFING COATING TO ENTIRE UNDERSIDE OF CONCRETE ARCH ABOVE THE NORMAL HIGH WATER ELEVATION.
- ⑧ INSTALL 1/2" CONCRETE TOPPING OVER ENTIRE TOP SURFACE OF CONCRETE ARCH.
- ⑨ ALL EXPOSED ABOVE-GRADE CONCRETE SURFACES TO RECEIVE PENETRATING CORROSION INHIBITOR IN ACCORDANCE WITH THE SPECIAL PROVISIONS.
- ⑩ GRIND EXISTING INSIDE FACE OF CONCRETE PARAPETS BELOW THE ASPHALT PATH TO PROVIDE A SUITABLE SUBSTRATE TO ADHERE WATERPROOFING MEMBRANE TO. WORK IS INCIDENTAL TO CONCRETE TOPPING BID ITEM.
- ⑪ SAWCUT 1/2" x 1/2" REGLET FOR TERMINATION OF WATERPROOFING MEMBRANE. TURN MEMBRANE INTO REGLET AND SEAL WITH MASTIC AS RECOMMENDED BY THE MEMBRANE MANUFACTURER. WORK IS INCIDENTAL TO WATERPROOFING MEMBRANE SYSTEM BID ITEM.

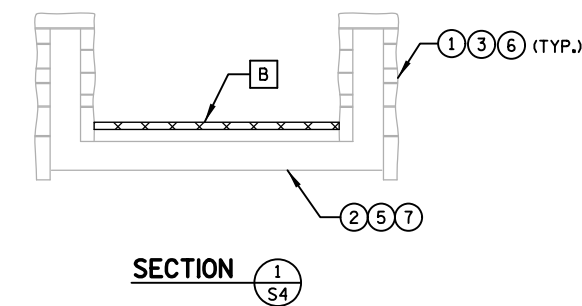
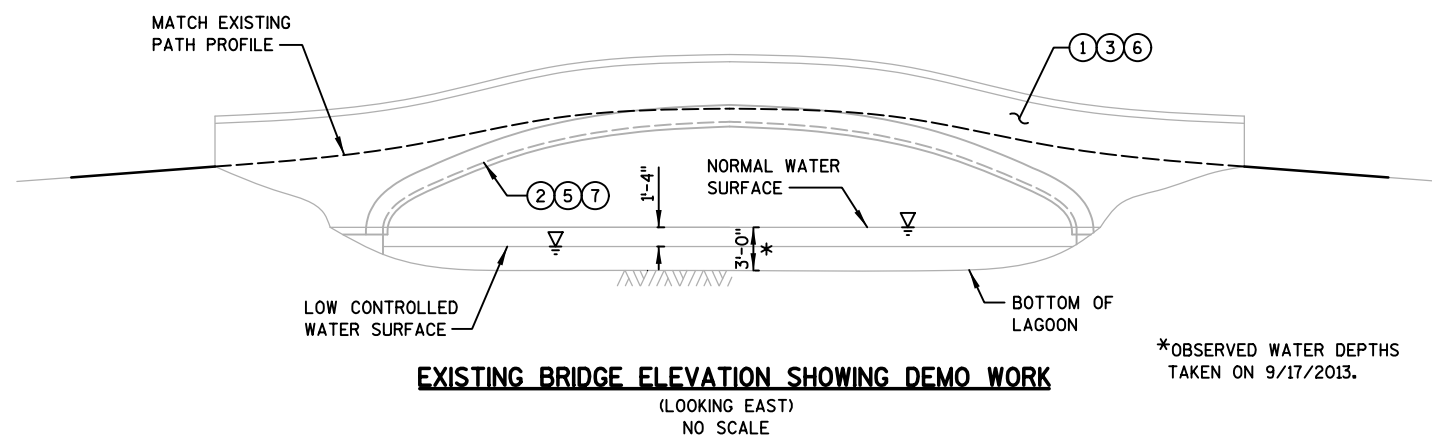
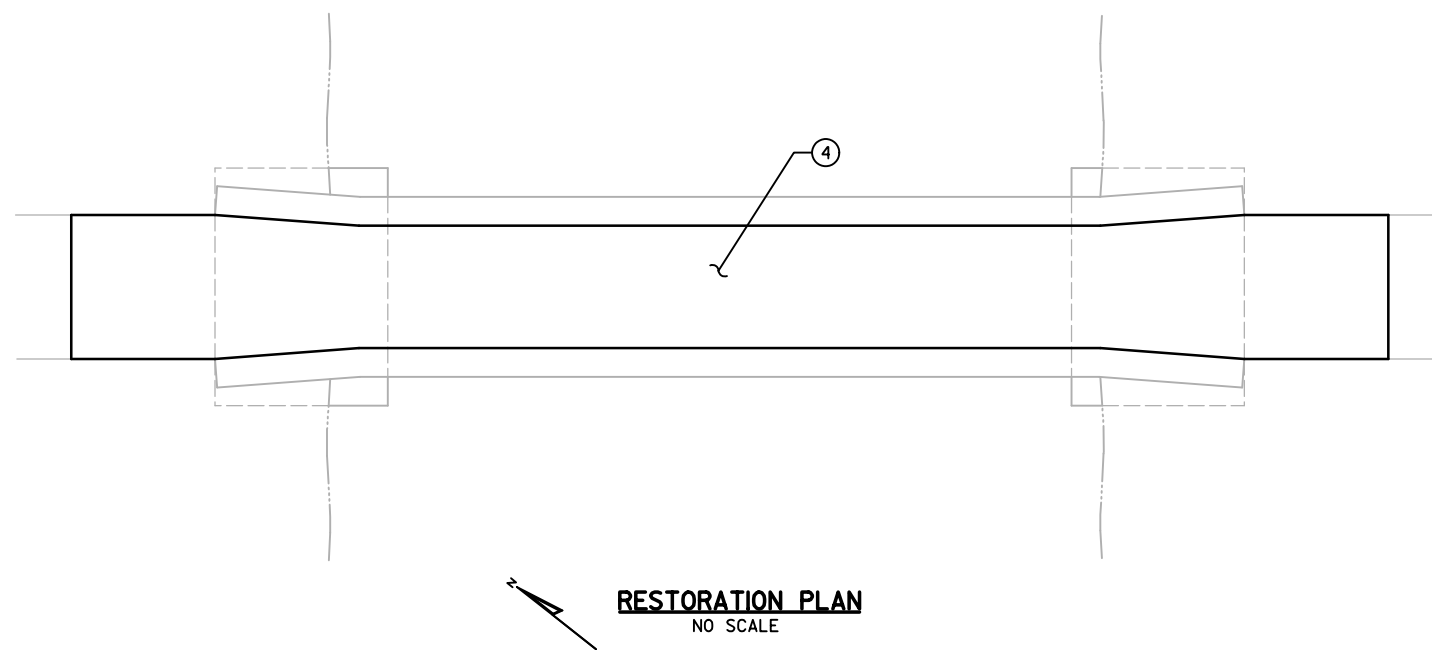
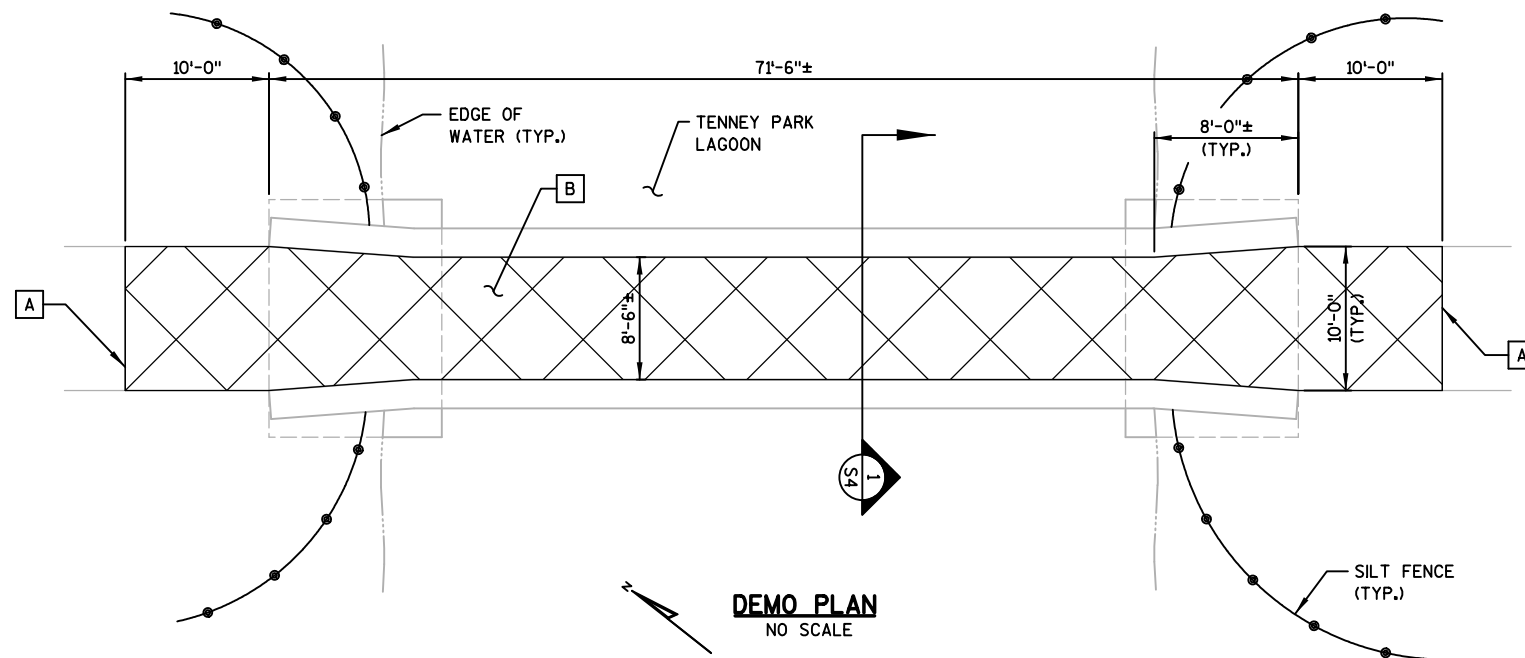
MARSTON AVENUE
PEDESTRIAN BRIDGE RESTORATION DETAILS
TENNEY PARK CONCRETE BRIDGE
HISTORIC RESTORATION - 2014
CITY OF MADISON PARKS DIVISION
MADISON, WISCONSIN

JOB NO.
1020.078
PROJECT MGR.
KRB



SHEET
5
S3

NO.	REVISIONS	DATE
1	DNR CHAPTER 30 APPLICATION	10/30/13
2	SHPO REVIEW	11/25/13
3	BID SET	2/14/14



GENERAL NOTES

SEE GENERAL NOTES ON SHEET S2.

DEMOLITION NOTES

- A SAWCUT EXISTING ASPHALT PAVEMENT.
- B REMOVE EXISTING ASPHALT PAVEMENT.

KEY NOTES

- 1 CLEAN ALL ABOVE-GRADE SURFACES OF STONE VENEER, PRIOR TO ANY REPOINTING OR STONE RESTORATION WORK.
- 2 SOUND ENTIRE UNDERSIDE OF CONCRETE ARCH IN PRESENCE OF ENGINEER AND PERFORM CONCRETE SURFACE REPAIRS WHERE REQUIRED AS DETERMINED BY ENGINEER.
- 3 REPOINT EXISTING DETERIORATED MORTAR JOINTS.
- 4 NEW 3" ASPHALT PAVING OVER EXISTING BASE COURSE.
- 5 APPLY CEMENT-BASED WATERPROOFING COATING TO ENTIRE UNDERSIDE OF CONCRETE ARCH ABOVE THE NORMAL HIGHWATER ELEVATION.
- 6 REPAIR CRACKED STONES USING EPOXY CRACK INJECTION. SEE STONE RESTORATION SPECIAL PROVISION.
- 7 APPLY PENETRATING CORROSION INHIBITOR TO UNDERSIDE OF CONCRETE ARCH.

NO.	REVISIONS	DATE:
1	DNR CHAPTER 30 APPLICATION	10/30/13
2	SHPO REVIEW	11/25/13
3	BID SET	2/14/14

**SHERMAN AVENUE
PEDESTRIAN BRIDGE DEMOLITION WORK**
TENNEY PARK CONCRETE BRIDGE
HISTORIC RESTORATION - 2014
CITY OF MADISON PARKS DIVISION
MADISON, WISCONSIN

JOB NO.
1020.078
PROJECT MGR.
KRB



SHEET
6
S4